

SAKAI

Pre-Delivery Report

NAME OF COUNTRY USA		DATE OF REPORT		
LOCATION		REPORT NO.		
CUSTOMER'S NAME		ADDRESS		
DISTRIBUTOR		ADDRESS		
DELIVERY DATE	MODEL	SERIAL NO. OF MACHINE	ENG. MODEL & SERIAL NO.	HOURS

NOTE: Below are the items related to the operation and lubrication of this unit to be serviced at Pre-Delivery
The specific machine Operation & Maintenance Manual details all items on this inspection.

Item	Check Point	Check	Item	Check Point	Check
Body and Framework	Visual Check (damage, loose bolts, rust & leakage)		Travel System Check Travel System by operation and inspection	Check Auto Speed function, SW884 & 994	
	Legible decals			Drum Gearbox oil level	
	Paint			Axle gear oil level (see Op. Manual)	
Engine	Oil Level			Roll, Tire, 20 PSI	
	Coolant Level		Low / High speed control		
	Belt tension		Vibe system Best vibe test is by measuring the vibe shaft speed*	Oil level	
	Air Cleaner			Check all Vibration controls	
	Idle speed/Maximum governed speed			Measure shaft speed	
	Exhaust smoke			Get shaft speed from Op. Manual	
	Throttle control cable or switch		Electrical System	Battery	
	Oil filter			Starter motor	
	Fuel filter			Alternator	
	Radiator			Warning lamp (OK monitor)	
Turbocharger		Lights & blinkers			
AC compressor		Water Spray System	Water pump		
Power Distributor (GW only)	Coupling			Water tank	
	Oil Level			Water filter	
Check Hydraulic System by operation and inspection	Oil level (hydraulic oil tank)			Timer	
	Pumps (traction, vibration, steering)			Spray nozzle	
	Motors (traction, vibration)		Scraper blade		
	Pipes and Hoses		Brake System	Test brake operation on a slight slope	
	Filters			Should barely roll, brake off	
	Unloader valve, insure its closed			Should stop instantly, brake on	
Oil cooler		Verify foot brake operation			
Check Steering System by operation and inspection	Steering orbitrol		Other	Exact Compact Meter (Asphalt mach)	
	Power cylinder			Blade	
	Center pin, Lubrication			ROPS (Torque bolts)	
	Hoses			Review Operator & Safety manuals	

Comment:

* To check, get correct spec and measure using a non-contact Reed Tach. Recommend the **Treysit Sirometer**, easy to find on web.

This machine has been serviced and is in satisfactory condition. Adequate information has been given on its operation, care, maintenance, safe operation procedures. The Operation & Maintenance manual has been received.

CUSTOMER'S
SIGNATURE _____

SERVICEMAN'S
SIGNATURE _____

Warranty Registration Attachment Guide

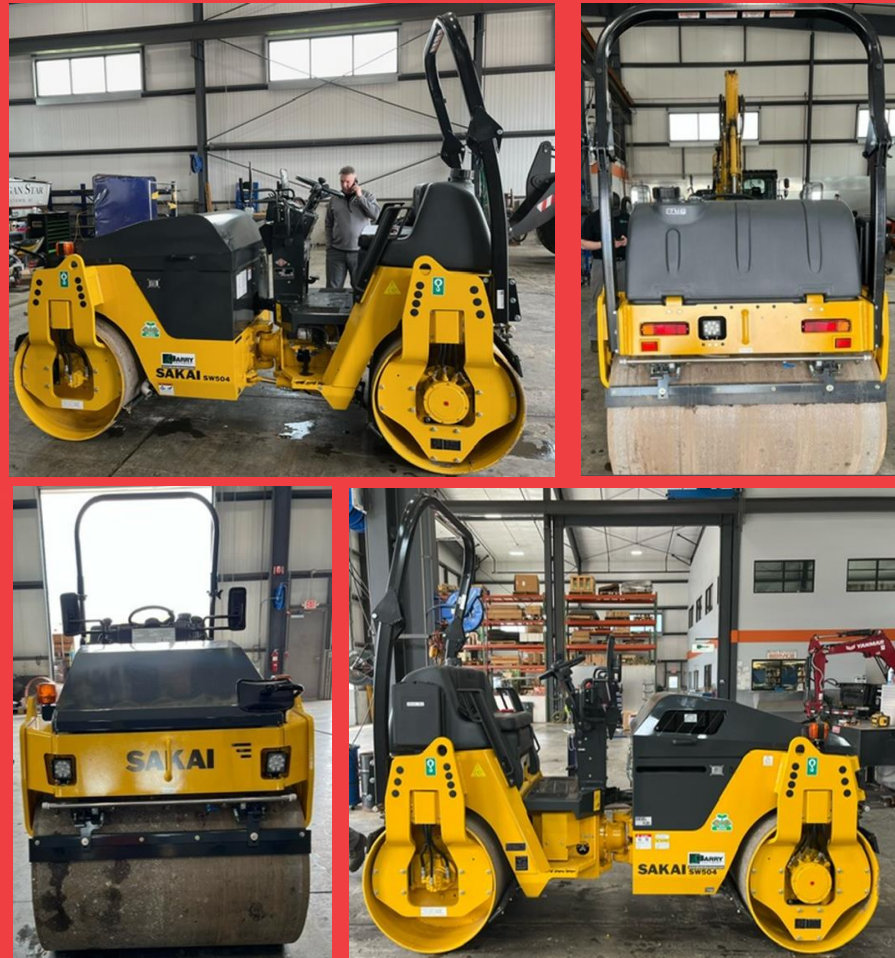
Serial Number Plate

Hour Meter Reading



4 Side Pictures

Signed PDI Form



SAKAI		Pre-Delivery Report			
NAME OF COUNTRY	USA	DATE OF REPORT	5/15/2024		
LOCATION	Adairsville, GA	SUPPLY #	Work Order #		
CUSTOMER'S NAME	Sakai America	End-User address			
DISTRIBUTOR	Dealer Name	Dealership address			
DELIVERY DATE	Date Delivered to End-User	MODEL	SW504		
		SERIALS OF MACHINE	18074-30393		
		ENCL. MODEL & SERIAL NO.	D1805T / 7PE57W 2.3		
		BOOKS			
NOTE: Below are the items related to the operation and lubrication of this unit to be serviced at Pre-Delivery. The specific machine Operation & Maintenance Manual details all items on this inspection.					
Item	Check Point	Check	Item	Check Point	Check
Body and Framework	Visual Check (damage, loose bolts, rust & leakage)	✓	Travel System	Check Auto Speed function, SW584 & 994	NA
	Legible decals	✓		Check Travel System by operation and inspection	
	Paint	✓	Drum Gearbox oil level	✓	NA
Engine	Oil Level	✓	Axle gear oil level (see Op. Manual)	✓	NA
	Coolant Level	✓	RdL. Tire, 20 PSI	✓	NA
	Belt tension	✓	Low / High speed control		
	Air Cleaner	✓	Vibe system	Oil level	✓
	Mile speed Maximum governed speed	✓		Check all Vibration controls	✓
	Exhaust smoke	✓		Measure shaft speed	✓
	Throttle control cable or switch	✓	Get shaft speed from Op. Manual	✓	
	Oil filter	✓	Electrical System	Battery	✓
	Fuel filter	✓		Starter motor	✓
	Radiator	✓		Alternator	✓
Turbocharger	✓	Warning lamp (OK invention)		✓	
AC compressor	NA	Lights & blinkers	✓		
Coupling	NA	Water Spray System	Water pump	✓	
Oil Level	NA		Water tank	✓	
Check Hydraulic System by operation and inspection			Water filter	✓	
Pumps (traction, vibration, steering)	✓	Tanker	✓		
Lines and Hoses	✓	Spray nozzle	✓		
Filters	✓	Scraper blade	✓		
Link/rod valve, insure its closed	✓	Brake System	Tire brake operation on a slight slope	✓	
Oil cooler	✓		Should barely roll, brake off	✓	
Check Steering System by operation and inspection	Steering orbital		✓	Should stop instantly, brake on	✓
	Power cylinder		✓	Verify foot brake operation	✓
	Center pin, Lubrication	✓	Other	Exact Compact Meter (Asphalt mach)	✓
Hoses	✓	Blade		NA	
		ROPS (Torque bolts)		✓	
			Review Operator & Safety manuals	✓	
Comment: Add any comments here					
*To check, get correct spec and measure using a time-scaled Road Tech. Recorder on the Treadle Steerer, call it first on web.					
This machine has been serviced and is in satisfactory condition. Adequate information has been given on its operation, care, maintenance, safe operation procedures. The Operation & Maintenance manual has been received.					
CUSTOMER'S SIGNATURE: NOT Required			SERVICEMAN'S SIGNATURE: Technician Signature or Manager Signature		

Additional pictures are recommended but not required. Picture of the operator's manual installed in the manual box, a picture of the seat, and a picture of the articulation lock pin.