

TW354(48") & TW504 (51") Combi Vibe Roller

High Frequency vibe drum and static (super-flat) pneumatic tires.

How to Prepare and Use Release Agent



SAKAI
MASTERS OF COMPACTION

Locations of Release Agent and Water Spray Systems

Basic, not option!

Water spray tank



Water spray bar and nozzles

Release agent spray bar and nozzles

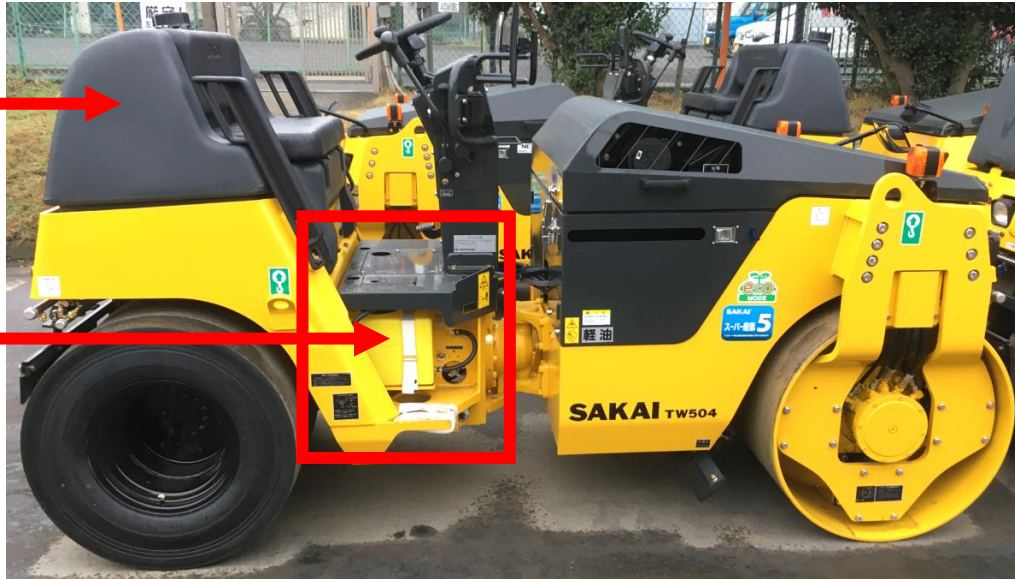
Release agent tank



THICK & THIN Release Agent(R.A.)

THIN R.A. →

THICK R.A. →

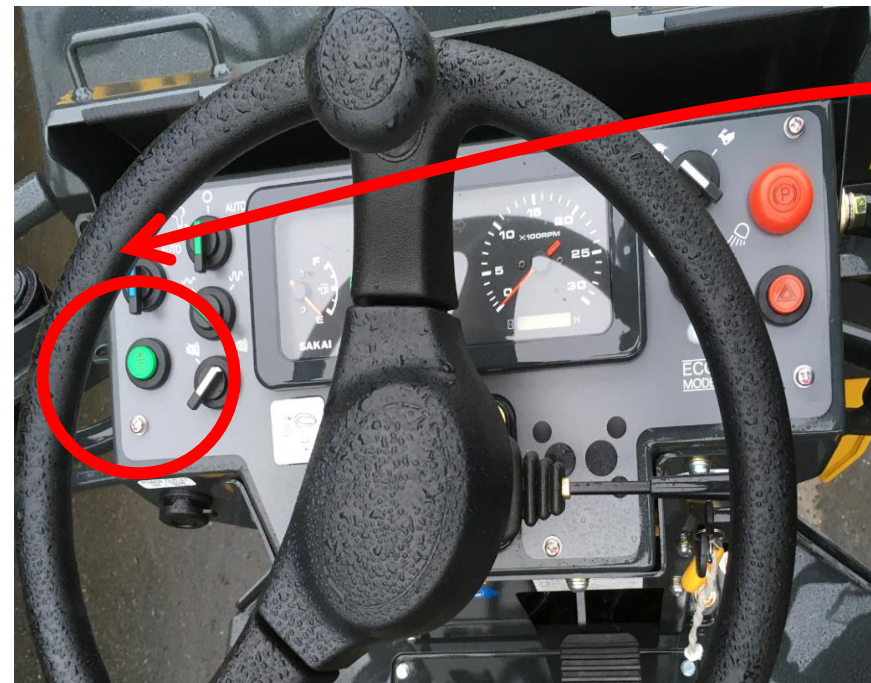


	R.A. Tank(THICK R.A.)		Water Tank(THIN R.A.)	
	TW354	TW504	TW354	TW504
Tank Capacity	2.6 gal		52.8 gal	81.9 gal
Dilution Rate	1:5~1:10		1:100~1:200	
Release Agent to use	0.25 gal ~ 0.5 gal		0.25 gal ~ 0.5 gal	0.8 gal ~ 0.4 gal

Check liquid level in the tanks

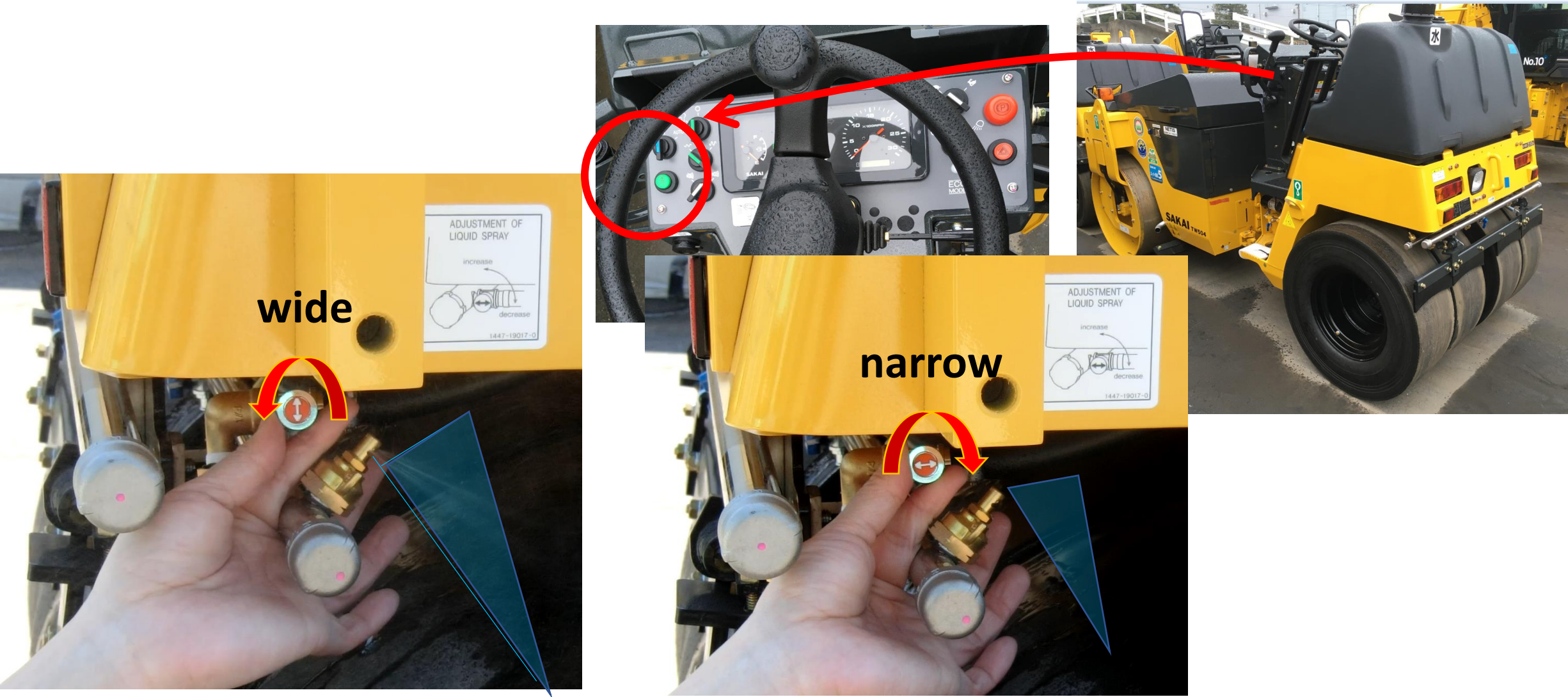


THICK R.A.



Press and hold down green button as you need spraying

Adjust THICK R.A. spray width enough to cover entire tire width



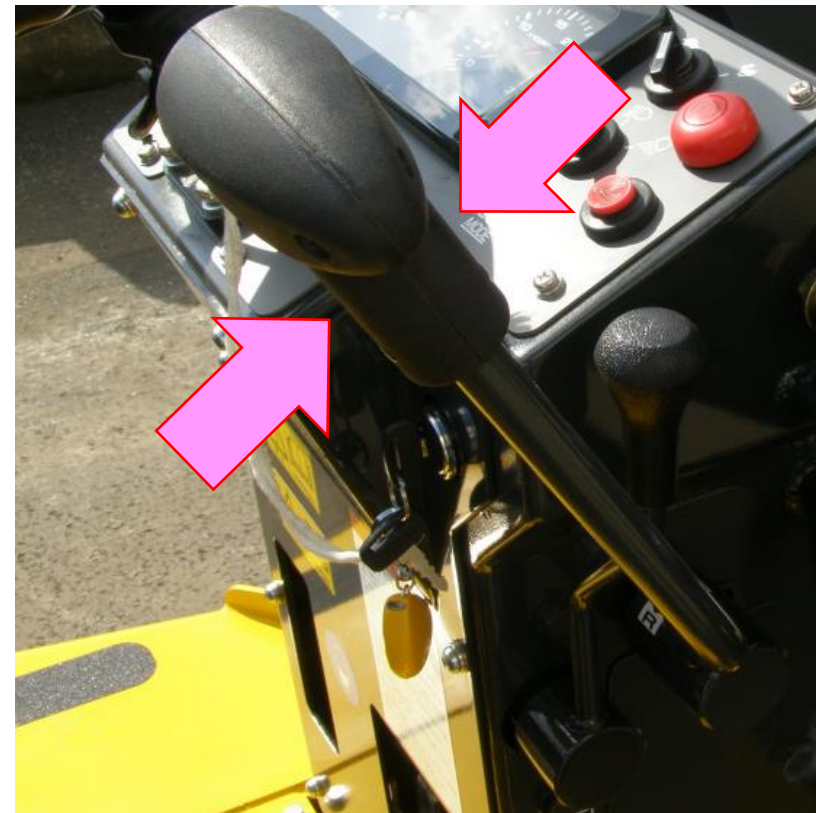
Move machine slowly and apply THICK R.A.
around the tire





Save THIN R.A. by Auto spray mode

- AUTO: THIN R. A. spray stops automatically at neutral of FNR lever.
- Approx. 20% of water consumption can be saved.



Auto nor
Manual THIN
spray mode
does not
activate
THICK R.A.

TIPS

- Use THICK R.A. when making 1st pass in the paving section
- Do NOT use THICK R.A. and THIN R.A. at the same time.
- Apply THICK R.A. around the tire before resting the machine on the mat.
- Take water(THIN R.A.) from water tank via plastic tube for easy preparation of THICK R.A. Especially, when water truck is away.
Ref.P12~14



Easy Preparation of THICK R.A.



Left side



Connect a tube
Going to the other side



Also, Connect to spray bar valve

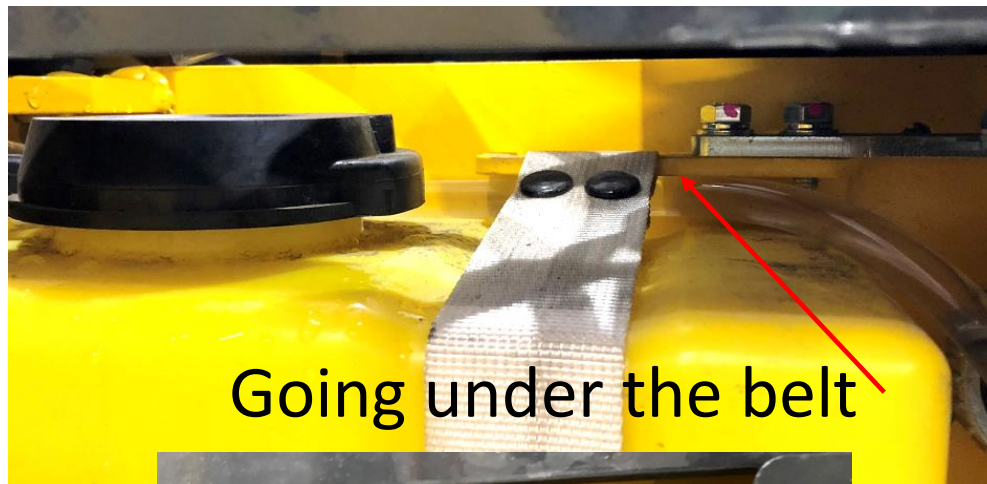
Tube size

D	d	L
1 / 2"	3 / 4"	6ft
12.7mm	9.5mm	1.8m

Easy Preparation of THICK R.A.



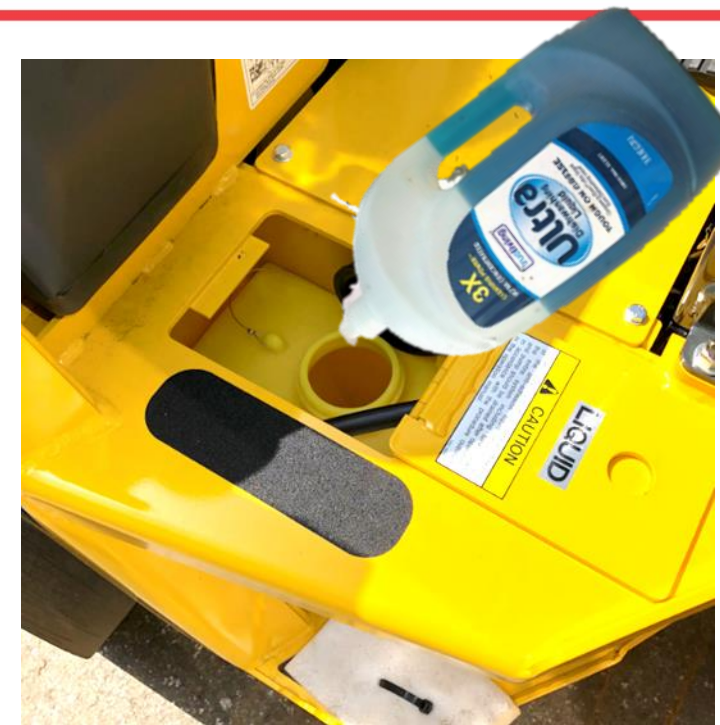
Coming from the other end
Through the hole



Going under the belt



Storing the tube



Put 0.25 ~ 0.5 gal

Easy Preparation of THICK R.A.



Open the valve



Water comes through



More water comes through by turning on the pump(video)

Machine Specifications

	TW354	TW504
Width	48"	51"
Drum Vibe. Frequency	3,120VPM	
Drum Amplitude(L/H)	0.013"	0.012"/0.016"
Speed(L/H)	0-4.3mph/0-6.2mph	
Drum Thickness	0.5"	0.7"
Rear Tires	4	
Rated Output	24HP	
Liquid Tank Size	2.6 gal	
Water Tanks Size	52.8 gal	81.8 gal

24HP is enough to propel and vibrate only front drum

Thank You

